

Trauma Center Practice Management Guideline

Iowa Methodist Medical Center — Des Moines

Oral Anticoagulant Emergent Reversal Management Guideline

PEDIATRIC
Practice Management Guideline

Effective: 02/2024

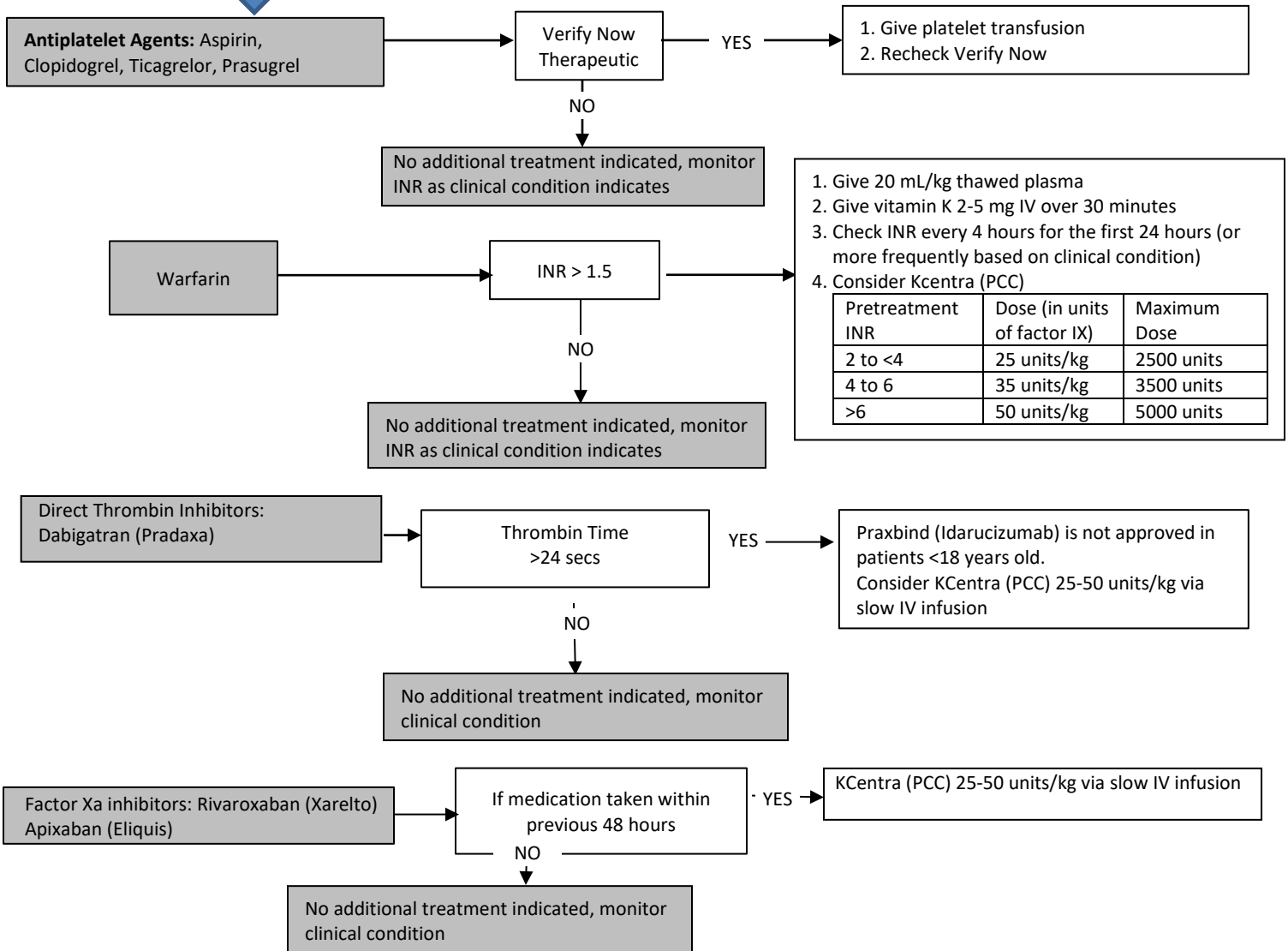
Contact: Trauma Medical Director

Reviewed: 04/2024

General Measures

- Control bleeding with local hemostatic measures
- Initiate appropriate resuscitation measures, including blood products
- Insure adequate urine output
- STOP any anticoagulant/antiplatelet agent if not already done, and record time of last dose
- Laboratory Orders STAT: CBC, BMP, fibrinogen, Thrombin Time, a PTT, PT/INR, Trauma Rotem

Reversal Strategies



Major Bleeding: Defined as intracranial hemorrhage or significant decrease in the hemoglobin concentration resulting in hemodynamic compromise or compression of a vital structure and felt to be related to anticoagulation.