



Lasting
Impact



Finley Health Foundation Impact Report
2024

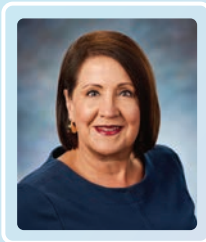


UnityPoint Health
Finley Health Foundation

mission

Finley Health Foundation provides financial support to UnityPoint Health - Finley Hospital and the Dubuque Visiting Nurse Association via ongoing fundraising activities - through the cultivation and solicitation of gifts from private individuals and families, area corporations, foundations and government entities that can be used to support operations, clinical programs and major capital projects.

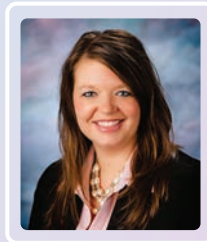
FOUNDATION STAFF



Barbara Potts

Executive Director
(563) 589-2358

Barbara.Potts@unitypoint.org



Tonya Reicher

Development Specialist
(563) 589-2572

Tonya.Reicher@unitypoint.org

contact us



Amy Schauer

Director of Development
(563) 589-2485

Amy.Schauer@unitypoint.org

TABLE OF contents

- 5 Our New Addition is on the Way
- 6 Giving Back Central in Burbach's Life
- 8 2024 Miracles on the Mississippi
- 9 VNA Golf Outing
- 10 Philanthropy, A Family Tradition
- 12 Partnering for Public Health
- 13 Impacting Nursing Education
- 14 Year in Review
- 16 Legacy Giving: A Commitment to the Well-Being of the Community
- 18 Legacy Society Members
- 19 2024 Disbursements
- 20 2024 Annual Giving

2024 BOARD OF DIRECTORS

UNITYPOINT HEALTH - FINLEY HEALTH FOUNDATION

Jennifer Havens, *President*
Poppy Conlon, *Chair*
Creed Waelchli, *Vice Chair*
Andy Mozena, *Secretary/Treasurer*
Dustin Farber, *Past Chair*

Randy Bender	Katie Moran
Ryan Burbach	Nicole Powers
Gary Dolphin	Maureen Quann
Tara Duggan	Hillard Salas, M.D.
Andi Even	Matt Scherr
Kristen Igo	Matt Spahn
Pat McCullough	

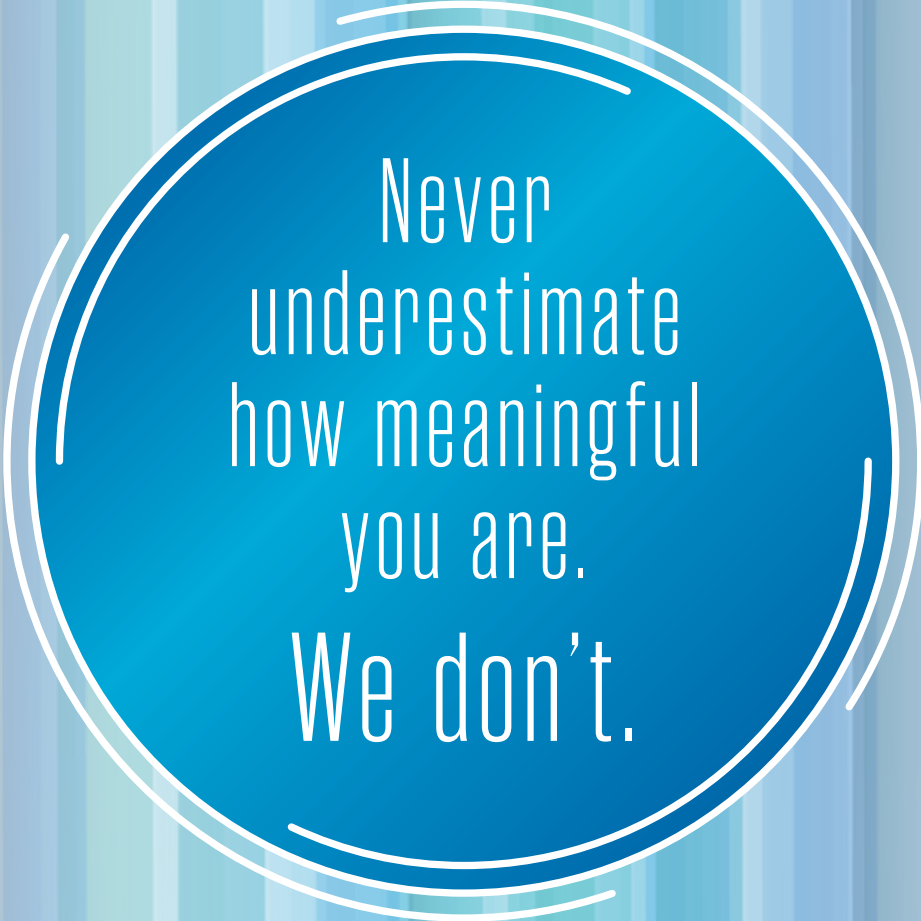
UNITYPOINT HEALTH - FINLEY HOSPITAL, FINLEY TRI-STATES HEALTH GROUP, INC.

Jennifer Havens, *President, Board Secretary*
Susan Farber, *Chair*
Kevin J. Lynch, *Past Chair*
Carol Cross, *Vice President of Finance,
Board Treasurer*

Bill Arnold	Kathleen Nacos-Burds
Kathy Buhr	Ryan Peterson
Roy Buol	Kiesha Sainci
Mark Dickson	Charlie Skemp
Sue Freeman	Lori Thielen
Michael Jansen	Nick Thompson
Nicole Jedlicka, DPM	Laura Witthoef, MD
Jason Knockel	

VISITING NURSE ASSOCIATION

Jennifer Havens, *President*
Kari Lammer, *Chair*
Patrice Lambert, *Vice Chair*
Susan Davison
Kimberly Hilby
Shea Chapin
Lt. Michael McTague



Never
underestimate
how meaningful
you are.
We don't.

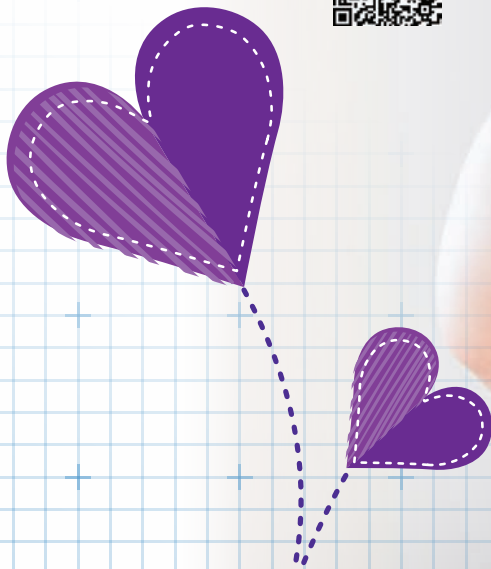
Our New Addition is On the Way!

UnityPoint Health - Finley Hospital is excited to announce work will soon begin on the Family Birthing Suites' C-Section Suite renovation.

Bringing a fresh new space, located just a few steps from our labor and delivery suites, the C-Section Suite will deliver an expanded operating room, a streamlined layout, enhanced functionality, and new equipment within a dedicated operating room for mother and baby.

With 623 births in 2024, Finley Hospital is not just a hospital, it is a preferred choice for an exceptional birthing experience.

You can support the Healthy Births and Babies Capital Campaign, by making your gift online at uph.link/DubuqueHealthyBirthsAndBabies or contact the Finley Health Foundation at (563) 589-2586.



BOARD SPOTLIGHT

Giving Back Central in Burbach's Life



Ryan Burbach

As Ryan Burbach begins his ninth and final year on the UnityPoint Health - Finley Health Foundation Board, he reflects on those who inspired his desire to give back to the community.

"My father (Greg Burbach) set a lifelong example of giving back through board service and community involvement. While he spoke about it very little, it was his actions that stood out to me. His commitment to making a difference, both in the public eye and to individuals in need that nobody will ever know about, taught me the importance of leading with action and contributing to the well-being of our community for the right reasons."

Throughout his career as CPA, business advisor, and wealth manager, Ryan has worked with individuals who reinforce that value for him. "Dubuque is a community where business owners and leaders have always led by example, demonstrating the importance of being involved and giving back."

Ryan remembers when the late Bob Wahlert explained to him "the more he gave away and helped others, the more unexplainable good things began to happen in his life." Ryan is a champion for the mission of the Finley Health Foundation, helping to ensure access to healthcare, which he considers "one of the most essential aspects of our community."

Since joining the board in January 2017, Ryan has experienced many meaningful moments and while it is difficult for him to pick just one highlight, he feels "one of the most rewarding experiences has been the annual Miracles on the Mississippi." He describes the event as "a best-in-class fundraiser," which most recently raised funds to establish a much-needed endowment benefiting the UnityPoint Health Pediatric Therapy Center. This center provides comprehensive therapy services from infancy through early

adulthood. Services include physical therapy, occupational therapy, and speech-language therapy.

"It's always inspiring to see the community come together to support such meaningful causes (and have a little fun while we are at it)!"

Being a champion for healthcare runs in the family. Both Ryan's oldest sister, Sarah, and sister-in-law, Danielle, are nurses. Ryan and his wife, Raquel, believe, "Supporting healthcare through philanthropy is an investment in the future health and well-being of our community. It is also a way to support the medical professionals who work tirelessly to care for others."

Ryan is the CEO at Friday Financial, Inc., a Dubuque based Wealth Management firm that he co-founded in early 2024. "At Friday Financial, our team knows that our greatest opportunity and number one metric is "lives impacted." We built our firm and business model knowing that by providing a personalized and life-centered approach to financial planning, we can help clients create the life they envision, the impact they value, and the legacy they want to leave for their family, causes, and local community. I continue to be inspired by our clients and the business leaders of our community who contribute to great local organizations such as the Finley Health Foundation. I am hopeful to do the same for many years to come."

In addition to his Board service, Ryan and his family share a personal connection to UnityPoint Health - Finley Hospital. "Finley Hospital holds a special place in my heart. My wife, Raquel, gave birth to our twin girls, Maddie and Norah, as well as our daughter, Lily at Finley. She had a C-Section with

each birth. Despite the crowded C-Section Suite, which the board is currently raising funds to improve, the staff and care we received were absolutely incredible. We also experienced the heartbreaking loss of our son, Ray, at 37 weeks and will be touched forever by the amazing staff who helped us navigate that moment in our life. The compassion, expertise, and support we received from the Finley staff during both the joyful and difficult moments were extraordinary. This experience has made Finley Hospital forever meaningful to our family."

The Family Birthing Suites at Finley Hospital impacts the lives of many mothers, infants, and families in the Tri-State area. In 2023, the Foundation, with the full support of the Foundation Board, kicked off the Healthy Births and Babies campaign.

This will support the upgrades and enhancements to the Family Birthing Suites C-Section Suite; a campaign, Ryan and his family chose to personally support.

"My wish is for everyone in our community to have access to exceptional healthcare during both joyful and challenging times. Volunteering and philanthropy play a critical role in achieving this by enabling us to build and maintain the facilities required and to be able to attract, retain, and reward quality healthcare professionals. This ensures patients can receive care locally rather than having to travel out of town, keeping families close to home during important moments. Philanthropy strengthens the entire community by bridging the gap between needs and resources."

Ryan and Raquel Burbach, along with daughters Maddie (13), Norah (13), Lily (7), and Gwen (5) continue the legacy of giving back that was central in Ryan's upbringing.



Supporting Philanthropy Through Special Events



MIRACLES ON THE MISSISSIPPI

Miracles on the Mississippi is an annual event to support UnityPoint Health - Finley Hospital. The 2024 event featured delicious hors d'oeuvres, unique live auction packages and country superstar group, The FRONTMEN accompanied by the Dubuque Symphony Orchestra.

Support from last year's event netted more than \$102,000 to establish an endowment for the benefit of the Pediatric Therapy Center at Finley Hospital. The endowment will provide resources today, tomorrow and forever, promising our youngest patients have the tools they need to continue healing and growing; ensuring every child meets their highest potential.

Learn more about the Pediatric Therapy Center Endowment by scanning the QR code.



A SPECIAL THANK YOU TO OUR EVENT SPONSORS

Aramark	Healogics
Conlon Construction Co.	Kunkel & Associates
Dubuque Bank & Trust	Premier Bank
Dubuque OBGYN	Shive-Hattery, Inc.
Dubuque Stamping & Manufacturing, Inc.	Steele Capital Management
Friday Financial	Telegraph Herald
Giese Manufacturing Company, Inc.	



SAVE THE DATE!

The 2025 Miracles on the Mississippi will be held in August 2025 at the Diamond Jo Casino!
Diamond Jo Casino!
uph.link/DBQMiracles

VNA GOLF OUTING

A record number of guests attended the 2024 VNA Golf Outing and enjoyed a beautiful day at Dubuque Golf and Country Club, all while supporting public health in Dubuque and Clayton Counties.

More than \$45,000 was raised during the golf outing that will stay local to ensure the VNA has funds necessary to continue providing and fulfilling public health needs.



SAVE THE DATE!

The 2025 VNA Golf Outing will be held on Monday, May 5, 2025, at Dubuque Golf and Country Club.
uph.link/vnagolf



PHILANTHROPY

A Family Tradition

The Duggan family believes philanthropy should be woven into the very fabric of society. Tara, Bo, Cooper, and Maverick's vision for the community is "one which people realize that it's expected to be charitable. We envision that being charitable is the rule rather than the exception." While it is often the case that people want to give anonymously and privately, the Duggan's philosophy is "we are proud of what we give, but more importantly, we want to inspire others to give."

As owners of multiple area businesses, including McDermott Excavating, America's Best Remodeling, Avalon Trailers, and Airborne Investments, they lead

by example, giving to causes that align with their vision for the community. The Duggans began teaching their children, Cooper (15) and Maverick (12) at a young age. In the days when the children were younger, they began involving them through acts of kindness such as picking out treats and toys to give animals at the Dubuque Regional Humane Society or dropping donations in the red kettles at Christmas.

As the children have gotten older, their parents began including them in philanthropic discussions.



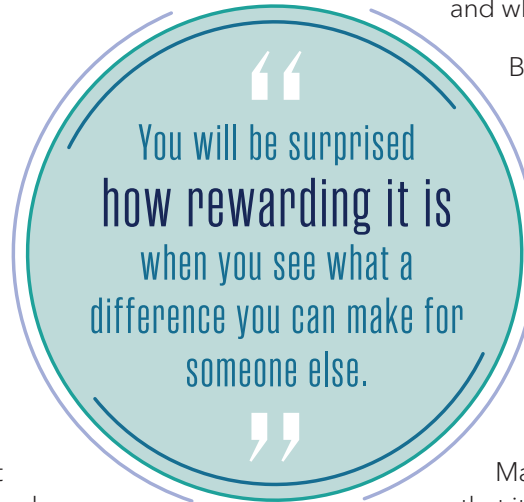
“We want them to know who is requesting help, why they need it, how it might change their situation, and to realize these are gifts, not loans. We’ve explained to them that true philanthropy means you don’t expect anything in return—you give for the sake of giving. At the end of the year, we do a review of every organization we have supported and talk about what we might want to do the next year.”

In the Duggan family, they believe “philanthropy extends far beyond financial donations. And being philanthropic means being empathetic and humble—letting those principals guide how you operate in the community and see those in need.”

Tara and Bo have both been inspired by members of their family who have served in healthcare. Tara’s mother was an ER nurse at UnityPoint Health - Finley Hospital for decades and volunteered as an EMT most of her life. Tara’s sister, Tina Humston, and sister-in-law, Susanna Duggan, are firefighter paramedics and Bo’s sister, Amber May, is a nurse at Finley Hospital. Healthcare philanthropy is a family endeavor, “Everyone gives in their own way, so they serve on the front lines, and we do what we can to support in a way that works for our family.”

In 2024, siblings Tara (Bo) Duggan, Troy (Kate) McDermott and Tina (Jon) Humston came together to honor the memory of their parents, Larry and Sharon McDermott, with a gift to support a refresh of the ICU Waiting Area and Family Consult Room inside Finley Hospital. The Larry and Sharon McDermott ICU Waiting Area was dedicated on October 25, which would have been their parents 50th anniversary. This gift will impact community members and families during some of the most difficult points in their lives. “We support healthcare philanthropy, so the services and facilities are there when people need them.”

Tara and Bo work to ensure that everyone in the family has input into their philanthropic decisions and also take into account their long-term employees, customers, and friends. “Without their support, we wouldn’t be able to give as we do. We try to make sure we’re supporting causes that are important to our family, employees, and customers. We communicate to them that they are a big part of how and why we donate.”



Both Cooper and Maverick are involved with volunteerism through their schools. Cooper shared her favorite activity is “one that I do with my mom. Every year we ‘adopt’ a family to give Christmas gifts to. I enjoy running around Target looking for the perfect toy dinosaur and wrapping boxes while listening to Christmas music. I have learned not to just be aware, but to be empathetic.”

Maverick believes, “my parents taught me that it’s [philanthropy] worth it because people need help from us, and we can do that. Doing volunteer work is worth it because you can make people smile and a lot of times, you’ll even have fun doing it.”

The Duggan’s impact will be far-reaching and when asked what advice they have for future generations who are thinking about becoming involved in healthcare philanthropy they told us, “Think of all the generations before you and all of their giving. Every organization supported by your grandparents, parents, aunts, uncles, etc. Eventually those gifts will end when they pass, and it is each generation’s responsibility to fill those voids. You will be surprised how rewarding it is when you see what a difference you can make for someone else.”

And this philanthropic family has indeed made an impact on Finley Hospital.

Partnering for Public Health

UnityPoint Health - Dubuque Visiting Nurse Association (VNA) is known for the work they do to ensure infants and children are properly vaccinated, but the VNA offers so much more than immunizations. Many grants, donations, and partnerships help to ensure the public health needs of our community are met.

Since 1910, the VNA has worked collaboratively to offer a variety of services and has adapted to the changing needs of the community. Today, the VNA offers WIC services, lead testing for children birth to 5 years old, child health case management and coordination, presumptive eligibility Medicaid applications, services to elderly and disabled, immunizations, and so much more.

The VNA works to improve safe sleep for infants with the help from a Variety-the Children's Charity grant that funded sleep sacks, Pack 'n Play portable cribs, and educational materials. The team is working to have culturally congruent and bilingual doulas certified to assist in prenatal and safe birthing experiences for expectant mothers. The Marshallese Community Navigator is additionally certified as a lactation consultant to further assist new mothers.

Thank you to the generous donors who helped make these critical services possible in 2024.



In 2024, the VNA saw a dramatic increase in the number of client services provided.

- **71,170** Client Services Provided
- **12,000+** WIC services provided to more than **3,000 individuals**
- **1193** lead tests performed on children birth to 5 years of age
- **2,074** vaccines provided
- **3,242** services provided to the elderly and those with a disability
- **191** Presumptive Eligibility Medicaid applications provided

Impacting Nursing Education

Since 2007, the Finley Hospital School of Nursing Alumni Association has provided nursing scholarships to area students pursuing a degree in the nursing field. 2023 saw the creation of the **Finley Hospital School of Nursing Alumni Endowment** through a generous gift from the Alumni Association. That initial gift kickstarted a campaign to grow the endowment, and with the support of many alumni, nursing scholarships on behalf of the alumni association will continue, indefinitely.

Recognizing the critical need of nurses and honoring their chosen profession, donors to the endowment have provided sustainability through scholarships to area students creating a pathway for future nurses. As the demand for health care services increases, the role of nurses has become more vital than ever before. Nursing scholarships not only provide financial support, but also elevate the status of nursing as a profession by recognizing its importance and value in the healthcare system.

The Finley Health Foundation is committed to providing future generations with the best healthcare possible and responsible investments to create sustainable financial resources that ensure continued access to excellent care for our community.

Endowments provide a dependable financial base to support growth and allows UnityPoint Health – Finley Hospital the foresight to think long-term. When you donate to an endowment, you provide an annual income that will be used each year to support the priorities of the hospital while the original donation or “principal” is maintained to provide for **today, tomorrow, and forever.**

We thank our generous alumni for supporting the endowment!

- Mrs. Mary B. Baker
- Ms. Sue Bevan
- Mr. and Mrs. Leonard Burke
- Mr. and Mrs. Rich Christopherson
- Dr. Tom and Judy Edmonds
- Mrs. Glenda Egan
- Finley Hospital School of Nursing Alumni Association
- Mrs. Rosemary Glaser
- Mrs. Vivian Hazer
- Ms. Beverly Hilgert
- Mrs. Debra Hutchcroft
- Mr. and Mrs. Daniel G. Kamps
- Mr. and Mrs. Richard J. Keppler
- Mrs. Beverly Kern
- Mrs. Marilyn Koehler
- Mr. and Mrs. Richard Kreiman
- Ms. Jill Kunkel
- Jere Murray, RN, Class of 1968
- Mrs. Debra Pascoe
- Mrs. Linda Ridgely
- Mrs. Elly Russell
- Mrs. Karen Sabrowski
- Mrs. Linda Snakenberg
- Mrs. Linda Stephens
- Mrs. Dianne Uthe
- Mr. and Mrs. Wayne Verslues
- Mrs. Janaan Wortinger



HOSPITAL STATS

Patients Served
40,417

Physical Therapy
Adult: 38,528
Pediatric: 2,220

Cath Lab
1,563 Procedures

Primary Care
Physician Visits
8,468

BABKA Outpatient
Surgeries
6,276

Wendt Cancer
2,664 Cancer Treatments Administered

Total Hospital Cases
121,579

Family Birthing Suites
623 Births
3 Sets of Twins

Human Resources
152 New Hires

Emergency
Departments Visits
23,244

UnityPoint at Home
10,860 Home Visits

VOLUNTEER STATS

Escorted **22,618** patients and guests throughout the hospital

3,015 individuals were touched by Spiritual Care

27 SHIIP volunteers served **2,495** community members and provided **\$1,710,135** in Medicare Part D Drug Plan cost savings

50 Sunshine Circle volunteers completed **9,527** hours of service

141 volunteers provided **20,489** hours of service to UnityPoint Health - Finley Hospital

6 military veterans provided volunteer service to Finley Hospital

2024 Year in Review

SUNSHINE CIRCLE

Since 1889, The Sunshine Circle has been raising funds to support UnityPoint Health - Finley Hospital. This all-volunteer group staffs the Sunshine Circle Gift Shop and organizes fundraising projects and events throughout the year to support important education, programming, services and capital needs that benefit the patients and team members of Finley Hospital.

Their philanthropic giving, from the first gift to the most recent \$100,000 pledge, stems from their passion to support babies and children and can be seen throughout Finley Hospital. In 2024, The Sunshine Circle made a gift to support the purchase of an Infant Giraffe Warmer for the Family Birthing Suites. A Giraffe Warmer is used for infants who need additional attention following birth, providing a warm, life-sustaining environment and ensuring team members have the equipment needed to provide the best care for our youngest patients.



VARIETY - THE CHILDREN'S CHARITY

In 2024, Variety - the Children's Charity partnered with the Finley Health Foundation to support two important projects within UnityPoint Health - Finley Hospital, a camera and monitor system, sleep sacks and pack-n-plays, totaling more than \$35,000.

The camera and monitor system will be used within the Family Birthing Suites to provide mothers, who have a C-Section, with an opportunity to see their infant the moment they enter the world, ensuring a more personal experience during a time that can be incredibly stressful. In an emergent situation where the baby needs additional care, the camera and monitor system allow the mother to continue watching her infant and provide a sense of calmness.

To introduce safe sleeping habits for infants, pack-n-plays and sleep sacks are provided to participating Marshallese families through the VNA's Maternal Health program. Marshallese and Hispanic families often reside inter-generationally making space to offer a safe sleep environment for infants difficult. A pack-n-play can be put up or taken down easily at any time depending on the needs of the families, and transportable as families travel to visit other family members. Sleep Sacks are proven to decrease the chance of SIDS and suffocation, by maintaining correct body temperature when used instead of loose blankets for sleep.



EMPLOYEE GIVING CAMPAIGN

Annually, the team members at UnityPoint Health - Dubuque show their passion for your community hospital by supporting the Finley Health Foundation's Your Passion, Our Purpose (YPOP) Employee Giving Campaign. Your Passion, Our Purpose is dedicated to bringing team members together to make the most impact for our shared passions.

Since the employee giving campaign began in 2017, team members have generously donated more than \$632,000 to various projects, programs and services, as well as the United Way of Dubuque Area Tri-States.

We are so thankful to all our amazing team members who choose to make an impact by giving back to the organization in which they work. Every day, our team members see the impact philanthropy has on the lives of patients and their families they serve.

**To our team member donors...
Thank You for finding your passion
and making a difference!**



In 2024, team members supported the YPOP Campaign by donating a record \$93,678. Proceeds from last year's campaign supported the iGrant program, Pediatric Therapy Center Endowment, Dubuque Visiting Nurse Association and United Way.



LEGACY GIVING

A Commitment to the Well-Being of the Community



Bernie and Susan

For Susan R. Farber and Bernie J. Saks, M.D., supporting UnityPoint Health - Finley Health Foundation through their estate through legacy giving, is a deeply connected opportunity to impact the future of the community and inspire others to do the same. For each of them, healthcare philanthropy is a key component to the tri-state's future success and vitality.

Susan is a native Dubuquer and has been connected to UnityPoint Health - Finley Hospital throughout her life. Bernie's connection came later in life, when he began practicing Radiology at Finley Hospital in 1996, later appointed Chief Radiologist in 2001. Susan has served on both the Finley Health Foundation and is currently the Chair of Finley Hospital Board of Directors. Bernie is currently serving as a contracted radiologist. They have generously given their time, skills, and support to the Finley Hospital and Finley Health Foundation missions for more than two decades.

As long-time supporters of Finley Hospital, Susan and Bernie understand the importance of aligning their contributions with the values and needs of the Dubuque community. "We believe in fostering a shared commitment among donors to strengthen our community through meaningful contributions that leave a lasting impact for generations to come," Susan shared. She added, "Dubuque is incredibly fortunate to have a strong culture of philanthropic

giving—a testament to our community’s generosity. Planned giving plays a vital role in ensuring the continued success and growth of essential services in perpetuity.”

Having grown up in a large family, Susan was surrounded by a culture of giving. “Volunteering, fundraising for and leading community projects was just something we did. For decades, my parents pitched in to support hospitals, schools, and neighbors; reinforcing the idea that in Dubuque, no true need goes unfunded. Legacy giving, to me, is an extension of that tradition. It reflects my deep gratitude for those who came before us, whose generosity shaped the opportunities I have been fortunate to have. I believe legacy giving is deeply local, and it is my hope that these gifts will continue to make a lasting impact on the community that played such a pivotal role in my life.”

Bernie was impacted by the generosity of others at the age of seven through the Big/Little Brothers Program in Los Angeles when he became a little brother. He states, “The guidance and support received shaped my life in meaningful ways. Later, after completing my fellowship at University of California, San Francisco, UCSF, in 1989, I embraced the chance to give back by becoming a Big Brother, creating a positive impact for someone else. Legacy gifts feel like an extension of that—intentional and far-reaching, allowing us to help many more people in a thoughtful and lasting way.”

Susan and Bernie engaged Thompson and Associates early in their estate planning and shared that, “Eddie’s guidance and expertise in estate planning helped us think more intentionally about the role of legacy gifts. We have learned the importance of periodically reviewing estate plans and consulting with trusted professionals to

ensure wishes align with values and goals.” Both believe that giving through their estate will have a profound effect on the community for future generations.

Susan shared, “By supporting healthcare philanthropy and establishing an endowment for Finley, we can help meet the current and future health needs of the Dubuque community. Healthcare and public safety are deeply interconnected, and a strong healthcare network is essential not only for the well-being, but also for attracting and retaining young professional families. Good healthcare is the cornerstone of a thriving community, yet the challenges for achieving this goal are ongoing and complex. That is why the generosity and leadership of Finley’s donors—both today and in the future—are so critical. Together, we can rise to these challenges and ensure exceptional care for generations to come.” As a member of the City of Dubuque City Council, Susan has a heightened awareness of the needs of local citizens.



Bernie chooses to support healthcare philanthropy through his planned giving, “because hospital care is essential—it is the backbone of every community. Hospitals like Finley provide not only life-saving care, but also the reassurance that help is always there when it is needed most. By investing in healthcare, we are ensuring that these vital services remain strong and accessible for generations to come.”

Members of the Finley Health Foundation Legacy Society embrace the promise to the future of healthcare. Susan and Bernie want others to know their “dedication to supporting Finley Health Foundation reflects our commitment to the well-being of Dubuque, both today and as part of our legacy for the future.”

LEGACY SOCIETY MEMBERS

Alvin S. Agard Estate †
 Eileen M. Aigler Estate † *
 Virginia Alspach Estate †
 Mr. and Mrs. Edward A. Babka † *
 Della A. Blair Estate †
 Richard Blum Trust
 Mrs. Antonia Bogas † *
 Mr. and Mrs. Steven J. Bonnet *
 Henrietta Booth-Lusch Estate †
 Ella Booth-Ruete Estate †
 Marie S. Briggs Estate †
 Elsa D. Broome Estate †
 Donald V. Brown Estate †
 Eunice M. Brown Estate †
 Wallace and Barbara Brown Trust
 Mr. and Mrs. Paul E. Butler
 Mr. and Mrs. Peter Butler †
 Rose M. Champion Trust
 Ms. Christine A. Chapin-Tilton *
 Maurice D. Conwell Estate † *
 Robert J. Corkery Estate †
 Mrs. Carol Merchant Dean
 Dr. and Mrs. Paul E. DeLong *
 Clara Dennis Estate †
 Richard and Aleen † Dirschel
 Helen Ruth Donatsch Ditmer
 Estate, C'38 †
 Dorothy Dorman Estate †
 Charlotte Louis Duttler Estate † *
 Elizabeth J. Eighmey Estate †
 Olive Elstrom Estate †
 Eunice Eustice Estate †
 Helen D. Everest Estate †
 Anonymous † *

Susan R. Farber and
 Bernie J. Saks, MD
 Clara M. Farr Estate †
 Anna M. Ficke Estate †
 Viola Fox Estate †
 Melvin J. Goetzinger Estate †
 Lucy Graff Estate †
 Willis Gruwell Estate †
 James Hadley Trust
 Mr. and Mrs. David L. Hammer † *
 Carl F. Hartman Estate †
 John W. and Mabel R. Heinen
 Estate †
 Julie C. Heuser Estate †
 Cornelia M. Higley Estate †
 Gladys A. Hueneke Estate † *
 Ruth K. Itnyre Estate †
 David Jacobson Estate †
 Dr. Don Kahle † and
 Mrs. Erm Kahle *
 James E. Kaufman Trust
 Kenneth and Sibylla Kaune Trust
 Dr. Peter J. Kearney † and
 Mrs. Kay I. Kearney *
 Mrs. Ruth A. Kehl
 Christine A. Kemp Estate †
 Pearl Kiefer Estate †
 Laurabelle A. Knepper Estate † *
 Mr. and Mrs. John E. Knox
 Edith K. Kritz Estate †
 Mr. and Mrs. William G. Kruse † *
 Benjamin W. Lacy Estate †
 Clive Lacy Estate †
 Lavon D. Laube Estate † *

Paul J. Laube Estate † *
 Mr. and Mrs. Chad C. Leitch
 T. B. Loetscher Estate †
 Edwin L. Lyons Family Trust
 Jane A. Lyons Family Trust
 Olive E. Lytle Estate †
 Robert P. Maher Estate †
 Frederick Massey Estate †
 Emilie Mathis Estate †
 Jeanne Ann May Fund for the
 Wendt Regional Cancer Center
 Robert L. McCune Estate †
 Wilfred J. Merfeld Estate †
 Catherine Mihm Estate †
 Mr. Robert B. Miller † and
 Mrs. Donna K. Miller *
 Jane Milson Lyons Trust
 Mr. and Mrs. Jeffrey P. Mozena
 Rosalyn Muehl Estate †
 Ruth Muir Estate †
 Helen Muir Living Revocable Trust
 Mildred A. Nimrick Estate †
 Helen O'Brien Estate †
 Rev. David A. Pacholke † and
 Mrs. Janann M. Pacholke
 Anonymous
 Walter F. Peterson Estate † *
 Col. Fred O. Phelps, C'59 and
 Mrs. Ellen Phelps
 Egidius H. Portzen Estate †
 Harriet Portzen Estate †
 Gerald A. Pugsley Estate †
 Charles L. Reeder Estate †
 Leonard H. Renk Estate †

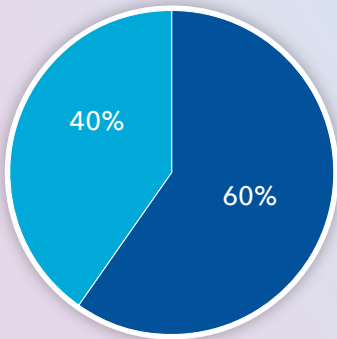
Mrs. Susan H. Ritts and
 Mr. Edwin Ritts *
 Eugene M. Rosenow Estate †
 Mr. and Mrs. Phillip A. Ruppel *
 Arnold J. Sand Estate †
 Jim and Amy Schauer
 Gertrude Scherr Estate †
 Arthur H. Schmalz Estate †
 Richard B. Schroeder Estate †
 Ms. Lois Schrunk †
 Tim Schwab
 Hazel L. Shady Estate †
 Charlotte S. Shambaugh Estate †
 O. H. Simonds Trust
 Marie C. Sincock Estate †
 Charlie and Julia Skemp
 Abraham Slimmer Estate †
 Raymond Sorensen Estate †
 Marie Stoffel Estate †
 Mr. and Mrs. Charles E. Stoltz † *
 Mr. and Mrs. Barrett Thompson *
 Dr. and Mrs. Edward Thompson *
 Mr. Robby Thompson *
 Berneta M. Decker Tigges Estate † *
 Doris Voss Estate †
 Helen D. Walker Estate †
 Wilma Wallace Estate † *
 Lester G. Wendt Estate †
 Irene S. Whitbeck Estate †
 Mr. and Mrs. John White †
 J.W. Winal Estate †
 Mr. Chad M. Wolbers and
 Dr. Regan A. Wolbers

† - Deceased

* - Charter Member

C - Finley Hospital School of Nursing Alumni and Class Year

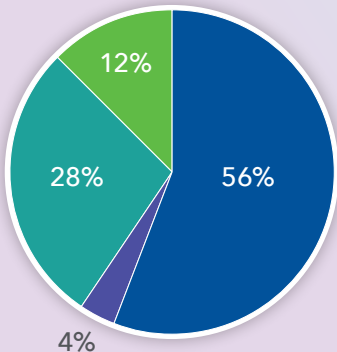
2024 Disbursements



2024 DISBURSEMENTS

Operating	-----	\$504,982.28
Capital	-----	\$339,956.00

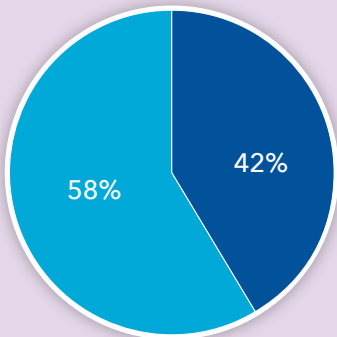
Total: \$844,938.28



2024 DISBURSEMENTS BY LOCATION

Finley Hospital	-----	\$472,417.43
Kehl	-----	\$30,726.37
VNA	-----	\$236,512.36
Wendt Center	-----	\$105,282.12

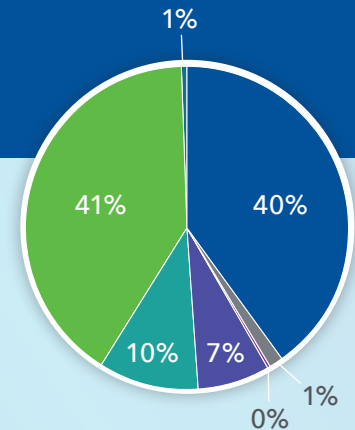
Total: \$844,938.28



2020-2024 DISBURSEMENTS

Operations	-----	\$2,536,126.84
Capital	-----	\$3,563,327.77

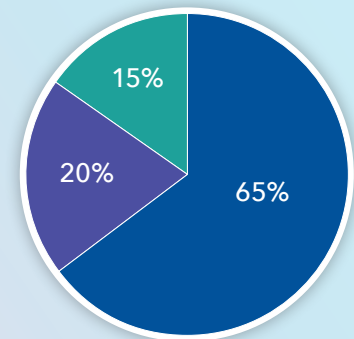
Total: \$6,099,454.61



2024 FUNDING PURPOSE

Capital	-----	\$339,956.00
Education	-----	\$11,707.65
Employee Assistance	-----	\$1,996.01
Equipment	-----	\$59,674.51
Patient Assistance	-----	\$85,079.63
Programs & Services	-----	\$341,894.09
Scholarship	-----	\$4,630.39

Total: \$844,938.28



2024 CONTRIBUTIONS

Finley Hospital	-----	\$449,562.22
VNA	-----	\$138,930.08
Special Events	-----	\$104,912.55

Total: \$693,404.85

2024 Annual Giving

We are sincerely grateful to every donor who contributed to the Finley Health Foundation in 2024. Your generosity supports UnityPoint Health - Finley Hospital, Finley Health Foundation and the Dubuque Visiting Nurse Association. We make every effort to ensure the accuracy of names, and we apologize for error or omissions. If you find an error, please contact Tonya Reicher at (563) 589-2572, or email tonya.reicher@unitypoint.org. For a complete list of cumulative giving, please visit the donor wall in the lobby of Finley Hospital.

\$25,000-\$99,999

American Heart Association
Schoen Family Charitable Trust
Sunshine Circle
Variety - the Children's Charity
Wahlert Foundation

\$10,000-\$24,999

Cafaro Foundation
Community Foundation of
Greater Dubuque
Conlon Construction
Conlon Development, LLC
Ms. Janet Groh Efferding
Mr. and Mrs. Michael Gantz
Col. and Mrs. Fred O. Phelps
Premier Bank
Mr. and Mrs. James R. Schaefer
Sisters of Charity of the Blessed
Virgin Mary
David W. Spahn
William and Mary Sterba

\$5,000-\$9,999

Bill and Vicki Arnold
Butler Family Foundation
Delta Dental of Iowa
Duggan Family Foundation
Brock and Andi Even
Fraternal Order of Eagles
No. 568
Geisler Brothers Company
Jeff and Jennifer Havens
Doug and Karen Horstmann
Mr. and Mrs. Jon Humston
McCoy Group, Inc.

Mr. and Mrs. Troy McDermott
The Klauer Foundation Trust

\$2,500-\$4,999

AIM Credit Union
Andrea Anglin
Aramark Healthcare
Mr. and Mrs. Jeffrey T. Bertsch
Breast of Friends
Mr. and Mrs. Jason Breithaupt
Dr. and Mrs. Paul E. DeLong
Mr. Richard Dirschel
Dubuque Bank and Trust
Dubuque Obstetrics &
Gynecology
Dubuque Stamping and
Manufacturing, Inc.
Susan R. Farber and Bernie J.
Saks, MD
Brenda Foust
Friday Financial, Inc.
Giese Manufacturing Company
Mr. and Mrs. Mark Gietl
Healogics
Heartland Financial USA, Inc.
Mr. and Mrs. Richard J. Heller
James B. and Melita A.
McDonough Foundation
Kunkel & Associates, Inc.
Dr. Deborah LaBeau
Allen G. Meurer, M.D.
Drs. Bryan P. Pechous and Krynyn
K. Buckley-Pechous
Jeffry and Barbara Potts
Dr. and Mrs. Braden C. Powers
Mrs. Cynthia O. Reuter
Mr. and Mrs. Matt Scherr

Shive-Hattery Architecture +
Engineering
Mr. and Mrs. Matt Spahn
Steele Capital Management, Inc.
Nicholas and Brenda Stumpf
Three Rivers FS
Mr. and Mrs. Michael P. Welbes
Dr. and Mrs. Thomas J. Wertz
Mr. and Mrs. Jake Zeal

\$1,000 - \$2,499

7G Distributing
A.Y. McDonald Mfg. Co.
Charitable Foundation
Linda Abitz, RN
LuAnn Ambrosy
Mrs. Michele Anderson
Peggy Barton
Mr. and Mrs. Chris M. Boxleiter
Greg and Trisha Brosius
Mr. and Mrs. Ryan E. Burbach
Mr. and Mrs. Michael Chase
Clayton County Foundation for
the Future
Donna and Rod Clemen
ComElec Services, Inc.
Cottingham and Butler, Inc.
Crescent Electric Supply Co.
Carol Cross
Mr. and Mrs. Jerry David
Mr. and Mrs. Richard E.
Dickinson
Mrs. Sara G. Dickinson and Mr.
Joshua R. Lynch
Gary and Cindy Dolphin
Rev. Chaplain Claudia Lee
Dorsch

Dubuque Professional
Firefighters Local 25
Dubuque Screw Products, Inc.
Dustin and Annie Farber
Fidelity Brokerage Services LLC
Finnin Family Foundation
First Community Trust, N.A.
Mr. and Mrs. Mark Fitzjerrells
Mr. and Mrs. Todd M. Geisler
Mr. Dan Giese
Drs. Elizabeth A. and
Matthew P. Gullone
Julie Harwick
Ms. Katherine A. Heiar
Mr. and Mrs. Robert W. Hoefler
Horizon Mental Health
Management
Jeremy and Brittany Hubanks
Dr. Nicole M. Jedlicka and Mr.
Donald J. Jedlicka
Dr. Gerald and Mary Jorgensen
Mrs. Erm Kahle
Stacey and Michael Killian
Kristen and Mike Igo
Dan and Jenn LaGrange
Mike and Pat Lehmkuhl
Dr. Paul A. Lindholm
Eric and Linda Lucy
Sue Ann March
Dr. Timothy W. Martin
MidwestOne Bank
Sue and Ken Miller
Molo Companies
Mary Peters
ProPulse
Advanced Radiology SC
Jason and Tonya Reicher

Edwin and Susan Ritts
Mr. and Mrs. Phillip A. Ruppel
Mr. and Mrs. John K. Schmidt
Smith Home Studios
Mr. David J. Sowle
Spahn & Rose Charitable
Foundation
Mrs. Linda Stephens
Michael and Norma Stoll
Mr. and Mrs. Scott Tedore
The Vogt Group
Theisen's More For Your
Community Grant Program
U.S. Bank
Cortney and Janet Vance
Dr. and Mrs. James J. Voelker
Mr. Austin Vogt
Mr. and Mrs. Creed J. Waelchli
Mrs. Hania Watson
Cindy and Kevin Weidemann
Westphal Electric
Dr. and Mrs. Thomas P. Williams
P. Christopher and Kirsten
Williams
Mr. Chad M. Wolbers and Dr.
Regan A. Wolbers
Mr. and Mrs. Robert Woodward,
III
Tom and Char Woodward

\$500 - \$999

American Realty
Anderson-Weber, Inc.
Anonymous
Avantax Planning Partners, Inc.
Dr. and Mrs. Michael Banyasz
Carla and Dan Belken
Dan and Becky Bellows
Marty Berger
Mr. and Mrs. Jeffrey P. Bodine
Jill and Howie Bradbery
Phil and Marsha Bryson
Mr. and Mrs. Gregory C. Burbach
Burbach Financial Services
Bill and Diane Callahan
Mr. and Mrs. Rich Christopherson
Mr. and Mrs. Michael Clasen
Wayne and Barbara Collins
Mr. Michael Corbett
Zoe and Heather Coyss
Mr. Randall L. Davis
Kyle Decker
Mr. and Mrs. Mark Dickson

Mr. and Mrs. James Dunn
Dr. Tom and Judy Edmonds
Elizabeth Fishler
Mr. and Mrs. Jamie Franck
Great River Oral & Maxillofacial
Surgery
GreenState Credit Union
Todd and Karen Gronau
Mark and Sara Guenther
Jessica Healey
Mr. Josh Hendricks
Mrs. Verle Henricks
Mr. Jeffrey Herkert
Jill Herring
Mr. Mark A. Hingtgen
Angela and Michael Hoffman
Home+FloorShow
Dr. Marsha Horwitz and Mr. Dan
Harris
David and Peggy Hudson
Charlye Jenkins
John Deere Dubuque Works
Shari Johnson
Joseph and Helen Ertl Family
Foundation
Kendall Hunt Publishing
Company
Dr. Tauseef A. Khan and Mrs.
Tania Tauseef
James and Nancy Klauer
Jason and Tina Knockel
Dr. and Mrs. Sudhir Koneru
Dr. and Mrs. David E.
Kragenbrink
Kari and Luke Lammer
Mr. and Mrs. Steve Launspach
Tim and Kim Loeffelholz
Mr. and Mrs. Patrick McCullough
McCullough Creative Group, Inc.
Mr. and Mrs. Scott McGuire
Mr. and Mrs. Robert R. McQuillen
Mr. Donald C. Moody
Mr. and Mrs. Kevin O'Connor
Joseph and Carol Powers
Mrs. Linda Ridgely
Riley Subaru
Mr. and Mrs. Louie Rosalez
Don and Wilma Sanders
Drs. Douglas A. and Martha A.
Schmid
MJ Schuler
Jenni Scott
ServPro of Dubuque

St. Elizabeth Seton Catholic
Mother's Study Club
StackStone Wealth
David and Becky Stark
Statera, LLC
Ms. RaeAnn Stefanick
Karen and James Stoewer
Tandem Tire & Auto Service, Inc.
Mr. Jeff Theis
Monte and Pamela Thorpe
Ms. Gretchen Tucker
Mrs. Donna Wahlert
Karyl and Mark Walther
Doug and Tara Weig
Sherry M. Weiner
Donald and Kathleen Wilhelm
Mr. Robert Wolter
Mr. and Mrs. Stephen Woodward
Ms. Marie Zoromski

\$250 - \$499

Kristie Asay
Stoy and Diane Asmussen
Mr. Jeffrey R. Baker
Mrs. Mary B. Baker
Mr. Mike Birkett
Jolene and John Biver
Mr. and Mrs. Gregory L. Blum
Boy Scouts of America
Dr. and Mrs. John A. Brennan
Amy † and Tom Brooner
Timothy and Nancy Butler
Mr. James B. Butler
Mr. and Mrs. Doug Carlton
Mr. and Mrs. James Carney
Mr. and Mrs. Matthew Cavanagh
Ms. Amy Clark
Mr. Jason Clarke
Mr. and Mrs. Michael J. Clemens
Dave Cordes
Dubuque Morning Optimist
Club
Eisenhower School
Ms. Theresa M. Eustice
Julie Everson, ARNP
Erin Fransman
Ms. Vicki J. Gassman
Ms. Brittany A. Glaser
Karen and Joe Gonzalez
Mr. and Mrs. Charles Green
Mr. and Mrs. Nicholas A. Grevas
Mr. and Mrs. Brian Griffin
Roberta and Darwin Harrington

Mr. Walter A. Harrison
Gloria Heacock
Mr. and Mrs. Chad Hill
Ms. Mariah L. Bauer
Dr. and Mrs. Ronald A. Iverson
Amy Jacobs
Mr. and Mrs. Thomas Johnson
Mr. and Mrs. Everett Jones
Amanda Josvanger
Mr. Michael Kates and Ms. Robin
Luckey
Patricia Kemp
Ms. Mary Klinger
James and Laura Knabel
Ms. Jill Kunkel
Susan and Frederick Kunnert
Mr. and Mrs. Paul R. Kurt
Kim and Sam Lamey
Tom and Loretta Ledvina
Mr. and Mrs. John Loes
Mr. and Mrs. John P. McCullough
Shelly Mescher
Jaime and Brent Meyer
Ms. Jeanette S. Muller
Bryan and Lisa Myers
Sara Noack
Lizzy O'Hara
Mrs. Allison Patnaude
Ms. Elizabeth G. Peterson
Amy Pittman
Mr. and Mrs. Brad J. Rausch
Rod and Phyllis Reicher
Amy M. Reynolds
Alisha Roe
Jim and Amy Schauer
Mrs. Carolyn F. Schmidt
Tina Shade
Dr. Muhammad Shah
Kimberly L. Simpson, RN
Amy Smith
Mr. Mike J. Squiers
Jolene Stackis
Ms. Ann Sweeney
Traci Sweeney
Razel A. Tugade
Turpin Dodge of Dubuque
Peggy Weiland, Sr. PT Tech
Barb White
Ms. Karen A. Wiederholt
Toby and Janice Wilke
Mr. David Ziegenfuss



continued

\$100 - \$249

Dalton Allan
Mr. and Mrs. Michael J. Ambrosy
Devin and Rylea Anderson
Anonymous
Beverly and Richard Anstoetter
Vicky Banwarth
Mary and Reid Batteram
Ms. LouAnn I. Bauck
Siva and John Beadle
Mr. and Mrs. John Berendes
Rev. Dr. Ken and Rev. Nancy Bickel
Andrea Mathes
Ms. Breana L. Birch
Edwin and Barbara Blinks
Londie Brauer
Melanie Braun
Mrs. Elizabeth A. Bray
Brenda Brehm
Tina M. Brehm
Mr. and Mrs. Daniel R. Bries
Ms. Kay L. Brimeyer
Jodi Bunge
Ms. Danica Burger
Ms. Nicole M. Burkart
Mr. and Mrs. Leonard Burke
Ann Butzier
Bridget Carley
Taylor Carpenter
Dawn Chase
Ms. Jerika M. Cheers
Mrs. Catherine A. Chesterman
Kayla Claussen, RN
Ms. Laura A. Clemen
Beth and Bob Clemen
Amanda Coakley
Mr. Gerald Cottrell
Doug and Linda Coy
Jill Curry
Dr. and Mrs. Michael J. Dalton

Ms. Marilyn Dansart
Beverly and Gary Davis
Ms. Lizzie M. Davis
Mrs. Susan Davison
Mr. and Mrs. Mike Dawson
Jennifer Demmer
Marlin and Susan Deweerdt
Mr. and Mrs. Steven Dirschel
District 20 Supply Co
Steven Dobihal
Ms. Kathryn J. Dolter, Ph.D.
Mr. and Mrs. Jerrod Dotson
Mr. and Mrs. James V. Droessler
Dubuque Police Department
Tammy and AJ Dutler
Mr. and Mrs. Duane L. Eaton
Ms. Theresa E. Eberhardt
Edward Jones
Deanna and Steve Ehrlich
Mr. and Mrs. Charles Ellis
Farm Bureau Financial Services
Mr. and Mrs. Thomas Flynn
Fred and Niki Freiburger
Tammy Freisinger
Mr. and Mrs. Len Froyen
Mr. Timothy Gallagher † and
Mrs. Kristine Gallagher
Ms. Mary Ann Gassman
Bev and Jerome Gaul
James and Bernita Gilbertson
Greater Dubuque Development
Corp.
Ms. Victoria L. Grether and Mr.
Stephen E. Moes
Mr. and Mrs. Kevin S. Gull
Mr. Timothy Hayes †
Mr. and Mrs. Harry J. Hefel
Joan M. Hengst
Ms. Katie Herring
Mr. and Mrs. Gary Herum
Ms. Carrie Hesse
Emilia and Robert Hinton
Brenda Howard
Dean Johnson
Dr. Alexander P. Johnson
Amy Kauffmann
Mr. and Mrs. Taylor Kelly
Christine Kemp
Mr. and Mrs. Richard J. Keppler
Ms. Angela L. Kirby
Kathleen Klein
Alisa Kluesner
Mr. Mark W. Koehler

Mr. and Mrs. Ryan Koopman
Donna and Mike Lakeman
Mrs. Patrice Lambert and Mr. Bill
Hosch
Lange Sign Group
Mrs. Maureen Larsen
Lynn and Gregory LeBlanc
Julie Lindenberg
Mr. and Mrs. Kyle Lippold
Liz Lyons
Ms. Piper L. MacRae-Egan and
Mr. Kevin Freiburger
Ms. Kaylina D. Manemann
Debra and Wayne Marcus
Denise and Rodney Matthews
Mrs. Marilynn Mazzanti
Tara McAuliffe
Ms. Kelsey J. McCloy
Karen McConnell
Laura McElmeel
Mr. and Mrs. Edward R. McEvoy
Ms. Julie A. Meyer
Ms. Carolyn Moor
Ms. Tracy A. Moravits
Ms. Jenna L. Muchow
Sandra Muchow
Mrs. Cynthia Mueller
Mrs. Kathleen J. Nacos-Burds
and Mr. Michael W. Burds
Mr. and Mrs. Barry Nudd
Ms. Miranda Olin
Mr. Andy D. Palmer
Mrs. Debra Pascoe
Mr. George F. Peil, Jr.
Mrs. Patricia Quade
Ms. Maureen Quann
Ms. Jennifer Radloff
Carrie Rausch
Fern and Jesse Reinstein
Lori Riegler
Rochelle Ries
Kris and Stephen Rodham
Kathy Rohner
Mr. and Mrs. Kevin P. Roling
Anne Roth
Sarah and Nick Ryan
John Schaefer
Max and Carlotta Schmidt
Ms. Heidi M. Schmitt
Lisa Schrobilgen
Ms. Erin Schuhwerck
Mr. James P. Schumacher
Mr. Rodney Shinabarger

Mr. and Mrs. Timothy
Shinabarger
Mr. and Mrs. Steve R. Siegworth
Mr. and Mrs. Jack H. Smeltzer
Jeremiah and Roberta Smith
Ms. Amy Smith
Mr. and Mrs. William R.
Sonnenberg
Ms. Karen R. Soppe
Ms. Cecily J. Sorensen
Mr. Chris Staver
Kent and Melanie Stiles
Ms. Karen S. Supple
Mr. John Swenson
Mr. Drew Townsend
Ms. Jen R. Tschiggfrie
Mrs. Leah Tucker
Jennifer Uthe
Amy Van Otterloo
Mike Vandermillen
Dr. and Mrs. John P. Viner
Mr. and Mrs. David J. Walsh
Cheri M. Weber
Mr. and Mrs. Craig Weilbaecher
Mrs. Carole M. Welu
Maureen Wertz
Nick and Laura Widmeier
Ms. Katie Wiedemann
Mrs. Renate G. Wiese
Ms. Sarah Willie
Lawrence and Kathleen Wolbers
Todd and Christy Wolf

Up to \$99

Mr. Louie A. Aguayo
Ms. Becky A. Ahmann
Mr. Evan R. Akers
Linda J. Althaus
Dawn and Craig Anderson
Anonymous
Ms. Jolee Arensdorf
Mrs. Mary Arthofer
Mr. and Mrs. Donald R.
Avenarius
Mr. and Mrs. Michael Avise
Ms. Rachel Bakey
Ms. Colleen Barry
Mr. and Mrs. Glenn L. Bartelme
Mrs. Joyce L. Bausman
Ms. Amanda L. Becker
Mrs. Alisha C. Beckett
Mr. and Mrs. Joseph R.
Beckmann

Linda Begle
Megan Bergfeld
Ms. Janelle A. Beringer
Ms. Jennifer Besler
Ms. Sue Bevan
Molly M. Bierman
Ms. Kaitlyn N. Birch
Mr. and Mrs. Brad Blackburn
Mr. John K. Blus
Doug and Suzanne Boeckmann
Lori and Thomas Bowling
Ms. Kim Boyes
Ms. Ashley M. Bradley
Mr. and Mrs. Daniel J. Braet
Ms. Gabrielle L. Brosius
Ms. Jan Brown
Mr. Aaron M. Burke
Patt Carmack
Domonique Chames
Mrs. Christine A. Chapin-Tilton
Mr. and Mrs. Joseph J. Cogan
Mrs. Mary A. Conzett
Mr. and Mrs. Brian E. Cooper
Linda and Thomas Coyle
Ms. Johanna D. Creger
Ms. Kelsey Crow
Ms. Phyllis Czarnecki
Jamie Davis
Ms. Sarah A. Davis
Ms. Charlita N. Day
Mr. and Mrs. Bradley J. Davis
Mr. Kevin P. Donovan
Mr. Richard Drey
Stacey Duve
Ms. Roberta Earles
Mr. and Mrs. Mark Ehlers
Ms. Andrea Ehlers
Eide Bailly, LLP
Ms. Bethany Else
Diane L. Emerson
Alicia M. Engelking
Patrick and Lisa Esch
Evening Embers Theresian
Ms. Renee M. Farrey
Ms. Ashley Fee
Mr. and Mrs. Kevin Felderman
Ms. Diana L. Ferguson
Ms. Ruth A. Fine
Ms. Chelsea N. Fishnick
Ms. Cassie M. Fitzgibbons
Mr. Alan Ford
Ms. Jolene B. Fransen
Mr. Clarence Funk

Ms. Janelle L. Garriott
Ms. Barbara E. Gatch
Jeffrey W. Gaul
Terri and Ken Gerken
Charles and Linda Giese
Mr. Patrick J. Gilligan
Mrs. Rosemary Glaser
Mrs. Beverly Godsey
Ms. Kenda L. Gourley
Mrs. Judith A. Graham
Marjorie and Paul Grevas
Ms. Sherry Greve
Mr. Erika Gushulak
Joey Gyorog
Ms. Laina M. Haas
Mr. Ryan Hardwick
Kathryn R. Hartman
Susan and Alan Hattel
Mrs. Vivian Hazer
Mr. and Mrs. Joseph J. Henkels
Mr. Christopher Herber and Mrs.
Karen Kane-Herber
Ms. Hannah Herbst
Mrs. Marjorie E. Herrig †
Ms. Beverly Hilgert
Ms. Elaine J. Hillery
Ms. Leah R. Hoffmann
Mr. Leroy V. Hoftender
Mrs. Michelle L. Hollenback
Mrs. Angela M. Hook
Mr. and Mrs. David Hunstad
Hy-Vee
Mrs. Darlene M. Jackson
Mr. John Johansen
Shirley A. Kalb
Ms. Janelle Kelly
Ms. Jennifer L. Kennedy
Ms. Robin M. Kennicker
Mrs. Beverly Kern
Ms. Kaitlin M. Kersten
Mr. Rob D. Kinder
Mr. and Mrs. Travis Klinefelter
Ms. Jodie M. Koster
Ms. Molly Krapfl
Mr. and Mrs. Richard Kreiman
Judith and Bob Krohmer
Ms. Rita Kruse
Mrs. Joni M. Kubesh
Ms. Stephanie Labandz
Mr. and Mrs. Michael Lambert
Mr. Curt Lansing
Mr. John C. Lau
Theresa and Timothy Lawler

Mr. and Mrs. Richard Leisen
Mr. and Mrs. Douglas Lenhart
Ms. Michala M. Lensing
Ms. Christie LeRoy
Mr. Trenton Q. Leslein
Mr. and Mrs. Dean A. Lessei
Mr. and Mrs. Allan W. Link
Ms. Anne M. Link
Mr. Jeff Loney
Mr. Dan L. Ludowitz
Mr. and Mrs. Terrance W. Lyons
Mr. and Mrs. Mike P. Mahoney
Mr. and Mrs. Steven J. Mai
Mrs. Patricia A. Manders
Ms. Samantha Mans
Ms. Helen T. Maro
Mr. and Mrs. William Mauer
Mrs. Victoria A. McCarthy
Mrs. Doris K. McClun
Mr. and Mrs. Lawrence McCready
Mr. and Mrs. Mark F. McCullough
Mr. and Mrs. Gary McGraw
Ms. Luann McQuillen
Ms. Alison Meier
Ms. Amy Meisenburg
Mrs. Shirley K. Meriwether
Mrs. Rosalie Meyer
Mr. and Mrs. Kevin M. Michalski
Rita Miesen
Mrs. Sally J. Miller
Mr. and Mrs. Mark Miller
Ms. Cristee M. Miner
Mr. and Mrs. Jeffrey E. Morton
Ms. Anne Moser
Mr. and Mrs. Rodney Mozena
Ms. Lindsey M. Murphy
Ms. Claire Neumann
Mrs. Arlene E. Neumeister
Mrs. Julie K. Neumeister
Mrs. Gwen Nilles
Ms. Carissa M. Oberbroeckling
Mr. and Mrs. Mark Onderick
Alice Osterkamp
Mr. and Mrs. Robert W.
Papenthien
James and Mary Patch
Mr. Michael Payne
Mr. and Mrs. Clark Payne
Ms. Kelly D. Peacock
Ms. Lisa A. Peterman
Ms. Donna M. Phillips
Michelle and Blake Pickel
Mrs. Alice J. Pike

Tanya and Carl Plumley
Ms. Jacqueline Poellet
Ms. Beth K. Preston
Mr. John K. Pulkrabek
Brendan and Jeanne Quann
Mary Sue Quinlan
Mrs. Virginia C. Rauch
Carolyn Rauen
Ms. Jody Rausch
Ms. Brittany A. Rausch
Dr. and Mrs. Mosali S. Reddy
Ms. Mary A. Redmond
Susan and Terry Reeg
Ms. Shannon N. Regan
Michael and Linda Reiss
Mr. and Mrs. David Resnick
Ms. Lorie A. Riniker
Deanne and Joseph Robbins
Cheri and Mark Roling
Marna Roth
Mrs. Sherry L. Ruden
Mrs. Jane A. Rusk
Mrs. Elly Russell
Mrs. Karen Sabrowski
Elaine and Perry Sampson
Ms. Shelly F. Sandahl
Mr. Richard C. Saul
Ms. Jen Schadle
Mrs. Sally A. Schmerbach
Mr. and Mrs. William Schmitt
Mr. and Mrs. Chad Schulte
Ms. Jean C. Schultz
Mr. Eric Schulz
Mr. and Mrs. Tim Schuster
Timothy Schwab
Mr. and Mrs. Bruce Scott
Mr. and Mrs. Daniel J. Sender
Mr. and Mrs. David Sendt
Mrs. Lois A. Shetler
Ms. Gabrielle Shireman
Ms. Tracy L. Sieverding
Ms. Morgan Simon
Ms. Danielle N. Simpson
Ms. Jamie L. Smith
Ms. Kiane R. Smith
Jennifer Smith
Mr. and Mrs. Ronald J. Smith
Ms. Becky S. Snyder
Ms. Lisa M. Sporer
Mr. and Mrs. Howard W. Steffen
Becca Steuer
Ms. Tamara L. Steuer
Mr. and Mrs. Dean Stillmunkes



continued

Mr. and Mrs. Wayne L. Strohmeier
Ben and Glenda Temple
Diane and Craig Thier
Mr. Matthew Thill
Dianne Thimote
Ms. Janet M. Thomas
Mrs. Carole M. Thul
Ms. Annalisa N. Till
Mr. and Mrs. Stephen J. Timmerman
Ms. Lauren F. Timmerman
Geraldyn and Roger Torkelson
Ms. Miriam E. Troutner
Karla Trumm
Ms. Julie M. Turner
Ms. Sharon Y. Tyler
Mr. and Mrs. Randy Vaassen
Mr. and Mrs. Wayne Verslues
Ms. Heidi M. Walker
Eleanor and Scott Wallace
Taylor Walsh
Ms. Diana Walsh
Bridget Walsworth
Ms. Lucille Walther
Ms. Laura A. Weber
Audrey Weeber
Mrs. Mary Beth Weiland
Ms. Stacey L. Welling
Ms. Elizabeth Welsh
Ms. Ellen M. Welu
Ms. Jessica A. Wetter
Dr. and Mrs. Michael Whitters
Mr. and Mrs. Dennis Williams
Mr. Robert C. Wise
Dr. Laura Witthoeft and Mr. Chad Witthoeft
Ms. Nancy Wright
Lisa and Grant Wulf
Mr. and Mrs. Harold Zimmerman

In Memory/Honor

Linda J. Althaus
In Memory of
Delbert Bleile
Bette (Bleile) Barth
Larry Althaus

Mrs. Michele Anderson
In Memory of
Dr. Thaddeus Anderson
Donald Kennedy
Barbara Anderson
Quentin Anderson

Anonymous
In Memory of
Jim Edwards

Mrs. Mary Arthofer
In Memory of
Mike Arthofer

Kristie Asay
In Memory of
Aleen Dirschel

Mr. and Mrs. Donald R. Avenarius
In Memory of
Kim Avenarius

Mr. and Mrs. Michael Avise
In Memory of
Amy Brooner

Mr. and Mrs. Glenn L. Bartelme
In Memory of
Mary Riegler

Ms. LouAnn I. Bauck
In Memory of
William and DeLores Bauck
Wayne R. Ellerman
DeLores M. Bauck
Elizabeth M. Schmidt
Irene C. Stafford
Kristine Sturm
Joan M. Vogt

Mrs. Joyce L. Bausman
In Memory of
Marlyn and Jodi Bausman

Joseph and Jeannie Beckmann
In Memory of
Pauline Crimmins
Connie Tyler

Joseph R. Beckmann
In Honor of
Jeannie Beckmann

Ms. Jennifer Besler
In Memory of
Wally Brown

Ms. Sue Bevan
In Memory of
E. Averle Brown Bevan

Doug and Suzanne Boeckmann
In Memory of
Amy Brooner

Suzanne Boeckmann
In Honor of
Doug Boeckmann

Londie Brauer
In Honor of
Don Feldman
In Memory of
Shirley Feldman
T.D. Feldman
Sue Feldman
Heather Feldman

Mrs. Elizabeth A. Bray
In Honor of
Acute Rehab Unit Team
Members

Elizabeth Bries
In Memory of
Amy Brooner

Mrs. Jan Brown
In Memory of
Mary Coffee

Mr. James B. Butler
In Memory of
Judi Butler

Mrs. Patricia A. Carmack
In Memory of
Violet Walters
Robert Carmack

Mrs. Christine A. Chapin-Tilton
In Memory of
Jac Tilton
Adaline Chapin

Mr. and Mrs. Michael Chase
In Memory of
Past and Present Finley
Employees

Mr. and Mrs. Joseph J. Cogan
In Memory of
Pam Park
Jane Swenson

Mrs. Mary A. Conzett
In Memory of
Jean Gentz
Nancy Rommel

Mr. and Mrs. Brian E. Cooper
In Memory of
Amy Brooner

Gerald Cottrell
In Honor of
Courtney Franzke
Jodie Koster

Linda and Thomas Coyle
In Memory of
Coyle Families
Bleile Families

Ms. Phyllis Czarnecki
In Memory of
Amy Brooner

Ms. Marilyn Dansart
In Memory of
Amy Brooner

Mr. and Mrs. Mike Dawson
In Memory of
Charles Hawkins

Dr. and Mrs. Paul DeLong
In Memory of
Mr. and Mrs. Elwin DeLong
Mr. and Mrs. Herman
Eschmann
Paul Eschmann
Ron DeLong

Mr. and Mrs. Richard E. Dickinson
In Honor of
Evie Rae Staver

Mr. and Mrs. Steven Dirschel
In Memory of
Aleen Dirschel

Ms. Kathryn J. Dolter, Ph.D.
In Memory of
Paul A. and Betty J. Dolter

Rev. Chaplain Claudia Lee Dorsch
In Honor of
Hyunmin Lee
Jill Nowlen
Zachariah Bloom
Lesun Texel
Tzulin Chiu
In Memory of
Kuopao Li
Tsaiyun Kuo Li
Nova Lanktree

Mr. Richard Drey
In Memory of
Amy Brooner

Mr. and Mrs. James V. Droessler
In Memory of
Melvin Jansen
Rita Jansen
Roman Droessler
Velma Droessler

Ruth Burlage
Dick Burlage
Brian Burlage

Duggan Family Foundation
In Memory of
Larry and Sharon McDermott

Ms. Roberta Earles
In Memory of
Amy Brooner

Dr. Tom and Judy Edmonds
In Memory of
Ruth Ann Nemmers

Eide Bailly, LLP
In Memory of
Ruth Ann Nemmers

Patrick and Lisa Esch
In Memory of
Amy Brooner

Mr. and Mrs. Kevin Felderman
In Memory of
Ruth Ann Nemmers

Mr. Alan Ford
In Memory of
Jan Ford

Mr. and Mrs. Len Froyen
In Memory of
Amy Brooner

Mr. Clarence Funk
In Memory of
Shirley Funk

Timothy and Kristine Gallagher
In Memory of
Arthur Trausch, Jr.
Susie Green
Brittany Boegel
Leona Grosser
Peg Gallagher
Jim Gallagher

Ms. Barbara E. Gatch
In Memory of
Ann O'Brien

Charles and Linda Giese
In Memory of
Carter Ray Giese

Mr. and Mrs. Mark Gietl
In Memory of
Amy Brooner

Mrs. Beverly Godsey
In Memory of
Cliff Godsey
Karen Wohlers

Mrs. Judith A. Graham
In Memory of
Rex Graham

Marjorie and Paul Grevas
In Memory of
Amy Brooner

Mr. and Mrs. Kevin S. Gull
In Honor of
Wound Care Team Members

Joey Gyorog
In Memory of
Amy Brooner

Mr. Walter A. Harrison
In Memory of
Lois M. Harrison

Kathryn R. Hartman
In Memory of
David Davis
Loretta Davis
Joseph Hartman

Jeff and Jennifer Havens
In Memory of
Amy Brooner
Rita Baker

Mr. Timothy Hayes †
In Memory of
Ann Hayes
Makayla Cook

Mr. and Mrs. Joseph J. Henkels
In Memory of
Rudolph Loeffelholz Family
Ervin and Clara Henkels Family

Mrs. Verle Henricks
In Honor of
Claudia Dorsch
Diane Asmussen
Dr. Jason Ellis
ICU Team Members
Surgery Team Members

In Memory of
Alan James Henricks

Patrick and Jill Herrig
In Memory of
Audrey Whitley
Paul Whitley
T.J. Slade
Judith Nemmers
Helen Kalmes
Rosemary Frantzen

Mrs. Marjorie E. Herrig
In Memory of
Elden Herrig

Mr. and Mrs. Gary Herum
In Memory of
Aleen Dirschel

Ms. Elaine J. Hillery
In Memory of
Her Loved Ones

Mr. Leroy V. Hoftender
In Memory of
Virginia Hoftender

Mr. and Mrs. Jon Humston
In Memory of
Larry and Sharon McDermott

Mr. and Mrs. David Hunstad
In Memory of
Thomas Wainwright

Mr. Dean Johnson
In Memory of
Mardell Johnson

Mr. and Mrs. Everett Jones
In Memory of
Grace Groves
Kaye Hahn
Frank and Beatrice Doeppke
Leo and Ruth Jones
Emmet and Bernadine Jones
Willi Buerger
Henry Peppmeier

Dr. Gerald and Mary Jorgensen
In Memory of
Amy L. Brooner
Msgr. James Barta
Fr. Paul Golden, CM
Fr. Joe Hauer
Fr. Mark Nemmers
Bonnie Wolske
Al Levin

Joseph and Helen Ertl Family Foundation
In Memory of
Dan McClean

Ms. Robin M. Kennicker
In Memory of
Paul and Lois Moes
Bob and Caroline Kennicker

Mr. Rob D. Kinder
In Memory of
Robert and Marguerite Wellner

Judith and Bob Krohmer
In Memory of
Ruth Ann Nemmers

Mrs. Joni M. Kubesh
In Memory of
Amy Brooner

Ms. Jill Kunkel
In Memory of
Kathy Miller, RN

Susan and Frederick Kunnert
In Honor of
J. Allen and Marijane Wallis, Jr.

Mr. and Mrs. Paul R. Kurt
In Honor of
Living Kurt Families

In Memory of
Deceased Kurt Families

Ms. Stephanie Labandz
In Memory of
Amy Brooner

Dr. Deborah LaBeau
In Memory of
Thaddeus Anderson, MD

Mrs. Patrice Lambert and Mr. Bill Hosch
In Memory of
Jacqueline Kauder Lambert
Nick Hosch
Mike Lambert, Sr.

Mr. Curt Lansing
In Memory of
Elayne Lansing

Mrs. Maureen Larsen
In Memory of
Philip Larsen

Mr. John C. Lau
In Memory of
Debra Lau

Theresa and Timothy Lawler
In Memory of
Ron Oberbroeckling
Joan Oberbroeckling
Joanie Lawler

Lynn and Gregory LeBlanc
In Memory of
Monica Meissner

Mr. and Mrs. Richard Leisen
In Memory of
Aleen Dirschel

Mr. and Mrs. Douglas Lenhart
In Memory of
Aleen Dirschel

Ms. Michala M. Lensing
In Memory of
Amy Brooner



Mr. and Mrs. Dean A. Lessei

In Memory of
Virgil J. Chevalier
Angela M. Rath

Mr. and Mrs. Allan W. Link

In Honor of
5 M/S Team Members

Mr. and Mrs. John Loes

In Memory of
Julian Nemmers
Ruth Ann Nemmers

Mr. and Mrs. Terrance W. Lyons

In Memory of
Bobby Lyons
Debbie Callahan

Mrs. Patricia A. Manders

In Memory of
Dorrance Manders

Debra and Wayne Marcus

In Memory of
Matthew Reuss

Mrs. Marilyn Mazzanti

In Memory of
Dr. Jeffrey Mazzanti

Mrs. Doris K. McClun

In Memory of
Jerry McClun

Mr. and Mrs. Lawrence McCready

In Memory of
Aleen Dirschel

Mr. and Mrs. Troy McDermott

In Memory of
Larry and Sharon McDermott

Mr. and Mrs. Edward R. McEvoy

In Memory of
Ethel Mauer
Verne Mauer
Richard Mauer
Dorothy McEvoy
Neal McEvoy

Mr. and Mrs. Gary McGraw

In Memory of
Merwyn Ellis
Bette Ellis

Ms. Luann McQuillen

In Memory of
Amy Brooner

Mrs. Shirley K. Meriwether

In Memory of
J. Bruce Meriwether

Allen G. Meurer, M.D.

In Honor of
Dr. Diane Sorsenson

Mrs. Rosalie Meyer

In Honor of
Patt Carmack and her 90th
Birthday

Mr. and Mrs. Mark Miller

In Memory of
Aleen Dirschel

Mrs. Sally J. Miller

In Memory of
Art Miller

Mr. Donald C. Moody

In Memory of
Shirley M. Moody
Kurt Moody

Mr. and Mrs. Rodney Mozena

In Memory of
Aleen Dirschel

Mrs. Cynthia Mueller

In Memory of
Robert H. Mueller
Adele Voss
Carl H. Voss
Hattie Batteram
Arline Dieterich

Mrs. Arlene E. Neumeister

In Memory of
John Neumeister

Mrs. Julie K. Neumeister

In Memory of
John Neumeister

Mrs. Gwen Nilles

In Memory of
Amy Brooner

Mr. and Mrs. Clark Payne

In Memory of
Amy Brooner

Ms. Donna M. Phillips

In Memory of
Ruth Ann Nemmers

Mrs. Alice J. Pike

In Memory of
Richard Pike

Ms. Jacqueline Poellet

In Memory of
Terry Bargman

Jeffry and Barbara Potts

In Memory of
Rose and Marion VanHorne
John Baker
Keith Koeller

Mrs. Patricia Quade

In Memory of
Roger E. Quade
Virginia R. Buol
Carol A. Boyes
Bill Boyes
Catherine Harms
Frank Harms
Freida Quade
Edward Quade

Brendan and Jeanne Quann

In Memory of
Pat Powers

Mary Sue Quinlan

In Memory of
John W. Quinlan

Mrs. Virginia C. Rauch

In Memory of
Joe Rauch

Ms. Jody Rausch

In Memory of
Sharon Stecher
Bill Stecher

Dr. and Mrs. Mosali S. Reddy

In Memory of
Ruth Ann Nemmers

Ms. Mary A. Redmond

In Memory of
Janaan Redmond

Jason and Tonya Reicher

In Memory of
Nichole Ann Reicher
Thomas Elliot Reicher

Michael and Linda Reiss

In Memory of
Tom Reiss

Mr. and Mrs. David Resnick

In Memory of
Amy Brooner

Mrs. Cynthia O. Reuter

In Memory of
Ryan Steffes

Mrs. Sherry L. Ruden

In Memory of
Babe Richard
Don Ruden

Mrs. Jane A. Rusk

In Honor of
David Wm Rusk

Don and Wilma Sanders

In Honor of
Their Loved Ones

Jim and Amy Schauer

In Honor of
Rita Baker
Madelyn Schauer
Jack and Rita Jane Tracy
Jim McCarthy
George and Marie VanNatta

Mrs. Sally A. Schmerbach

In Memory of
Ralph C. Schmerbach
Rose M. Miller
Frank A. Miller

Max and Carlotta Schmidt

In Memory of
Wally Brown

Mr. and Mrs. Chad Schulte

In Honor of
Aleen Dirschel

Ms. Jean C. Schultz

In Memory of
Joyce Nikolai
John and Colette Schultz

Mr. Eric Schulz

In Memory of
Ruth Ann Nemmers

Mr. and Mrs. Tim Schuster

In Memory of
The Jensen Family - Jeff, Jason,
Jeremy, Ann and Brian
Malinda Dietzel

Timothy Schwab

In Memory of
Ambrose and Katherine Schwab

Mrs. Lois A. Shetler

In Memory of
Harry W. Shetler

Mr. Rodney Shinabarger

In Memory of
Aleen Dirschel

Mr. and Mrs. Timothy Shinabarger

In Memory of
Aleen Dirschel

Ms. RaeAnn Stefanick

In Honor of
5 M/S Team Members
ICU Team Members

Mr. and Mrs. Howard W. Steffen

In Memory of
Devra Klauer Long

William and Mary Sterba

In Memory of
Anthony and Gladys Sterba
J. August and Helen Pearson
Dr. James Pearson, M.D.
Marguerite Pearson
Susan Marie Pearson
Lawrence Pearson
Martha Fleming
Catherine and Howard Birch
Anton and Josephine Sterba
Michael and Theresa Boos
John A. and Ida Pearson
Charlie Intravaia
Jan Pearson

Mr. and Mrs. Dean Stillmunkes

In Memory of
Aleen Dirschel

Michael and Norma Stoll

In Memory of
Louis and Fannie Silverstein
Russ and Betty Olson
John and Rita Chapman
Todd Sloane
Lawrence P. Stoll
Lillian and Raymond Cronin

Mr. and Mrs. Wayne L. Strohmeyer

In Memory of
Don and Marge Strohmeyer
Lucille and Joe Boyer
Jim Hirsch

Mrs. Carole M. Thul

In Memory of
David P. Thul
David F. Thul

Mr. and Mrs. Stephen J. Timmerman

In Memory of
Darlene Timmerman
Frank Timmerman

Mrs. Leah Tucker

In Memory of
Aleen Dirschel

Turpin Dodge of Dubuque

In Honor of those being
recognized as Nurse of the Week
Charlita Day
Dana Schemmel

Cortney and Janet Vance

In Honor of
the Vance Family
In Memory of
Violet Vance
John Vance, Sr.
John Vance, Jr.
Charles Hickerson
Cathy Mills
Ethel Erzen
Matt Erzen
Laveana Hickerson
Delbert and Phoebe Erzen

Mr. and Mrs. Wayne Verslues

In Memory of
Ruth Ann Nemmers

Mrs. Donna Wahlert

In Honor of
Dr. Laura Witthoef
In Memory of
Bob Wahlert

Eleanor and Scott Wallace

In Memory of
Melanie Hinman

Ms. Diana Walsh

In Memory of
Emmett Leo Clary

Karil Walther

In Memory of
Rita Baker

Ms. Lucille Walther

In Honor of
Ruth Ann Nemmers

Mrs. Hania Watson

In Memory of
Larry Watson
Brygida Laskowska

Cindy and Kevin Weidemann

In Memory of
Ruby and Charles Schmitz
Irene and Jack Weidemann

Mrs. Mary Beth Weiland

In Memory of
David L. Weiland

Mr. and Mrs. Craig Weilbaeher

In Memory of
Amy Brooner

Mrs. Carole M. Welu

In Memory of
T. J. Welu

Dr. and Mrs. Michael Whitters

In Memory of
Amy Brooner

Mrs. Renate G. Wiese

In Memory of
Dirk D. Werner
Delia Wiese

Dr. Laura Witthoef and Mr. Chad Witthoef

In Memory of
Amy Brooner

**Mr. Chad M. Wolbers and
Dr. Regan A. Wolbers**

In Memory of
Wally Brown

Ms. Nancy Wright

In Memory of
Aleen Dirschel

Mr. and Mrs. Harold Zimmerman

In Memory of
Aleen Dirschel



Gifts-in-Kind are a type of charitable giving in which, instead of giving money to buy needed goods and services, the good and services themselves are given. These gifts do not include gifts of cash or stock.

Addoco, Inc.
Anonymous
Beringer Family Farms
Berning Acres Dairy Farm Family
Edwin and Barbara Blinks

Mrs. Poppy R. Conlon and Mr.

Jason T. Benson
Conlon Construction
Cornerstone Nursery
Cremer's Meats
Mrs. Susan Davison
Gary Dolphin
Dubuque County AmVets -
Post 13
Dubuque Golf & Country Club
Dubuque Screw Products, Inc.
Dubuque Stamping and
Manufacturing, Inc.
Dyersville Golf & Country Club
EJ's Wine Shop
Dustin and Annie Farber
Susan R. Farber and Bernie J.
Saks, MD
Fried Green Tomatoes
Jeremy and Brittany Hubanks
Hy-Vee Asbury Plaza
Kristen and Mike Igo
Iowa Total Care
Kenneth and Donna Kramer
Lacoma Golf Club
National Mississippi River
Museum & Aquarium
O'Connell Organic Acres
Placid Pepper Uppers 4H Club
Premier Bank
Q Casino + Resort
Runde Chevrolet
Michelle Shafer, DO and Jared
Shafer
Steve's Ace Home & Garden
Sundown Mountain
Texas Roadhouse
Timmerman's Supper Club
Van's Liquor Store
Variety - the Children's Charity
Washington Middle School
Wicked Dame Wine + Bar



UnityPoint Health
Finley Health Foundation

350 N. Grandview Ave. | Dubuque, IA 52001

Nonprofit Org.
U.S. Postage
PAID
Des Moines, IA
Permit No. 813