

# Trauma Center Practice Management Guideline

*Iowa Methodist Medical Center — Des Moines*

*Blank Children's Hospital – Des Moines*

## ***Blunt Cardiac Injury (BCI) Management Guideline***

### **ADULTS**

Practice Management Guideline

Effective: 04/2024

Contact: Trauma Medical Director/Trauma Program Manager

Last Reviewed: 04/2024

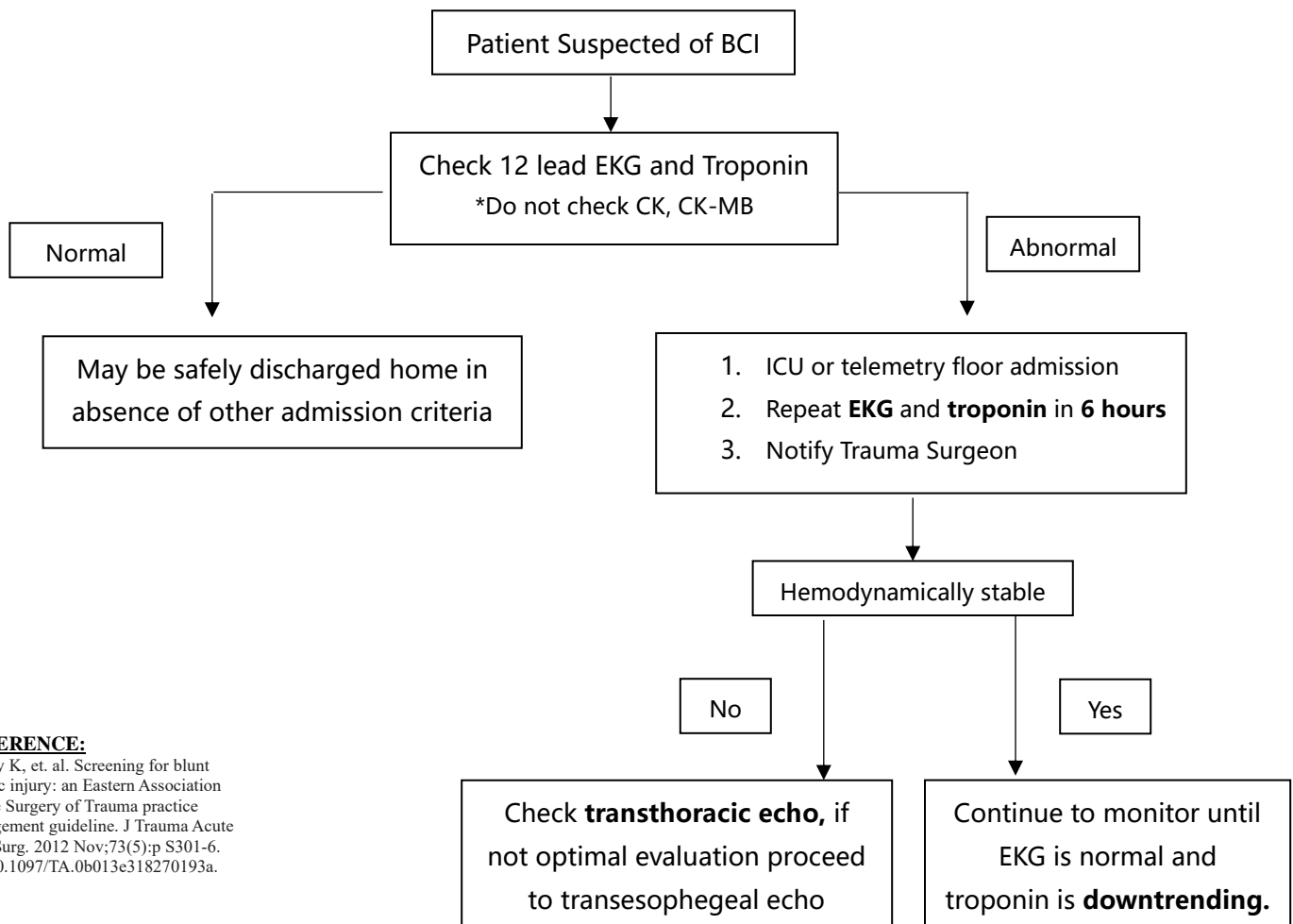
### **Blunt Cardiac Injury (BCI) Management**

Patients at high risk for BCI:

1. Blunt chest trauma AND at least one of the following:
  - a. Complaints of chest pain (not related to rib fractures)
  - b. Hemodynamically unstable patients unresponsive to resuscitation
  - c. Arrhythmia other than sinus tachycardia

Patients not requiring screening

1. Sternal fracture **without the above**



#### **REFERENCE:**

Clancy K, et. al. Screening for blunt cardiac injury: an Eastern Association for the Surgery of Trauma practice management guideline. J Trauma Acute Care Surg. 2012 Nov;73(5):p S301-6. doi: 10.1097/TA.0b013e318270193a.